

table vet
Anatomage



Anatomage

Table Vet

Visualisation of animal real anatomy

Continuing our legacy of bringing cadavers to life, Anatomage enables 3D visualisation of animal living anatomy with the Anatomage Table Vet. Anatomage Table Vet possesses an incredibly accurate and extensive data set of animal anatomy that provides essential resources and technology to veterinary programs. From virtual animal dissection to zoonotic disease library, the Anatomage Table Vet helps veterinary trainees acquire real-world knowledge through a mix of 3D dissection capabilities, real animal cases, and exceptionally segmented animal anatomy.

As Anatomage Table Vet contains real animal bodies, it offers an unprecedented learning experience for those who would like to interact with real animal cadavers in a chemical-free, technologically-inspired space. With Anatomage's renowned 3D visualisation capabilities, Anatomage Table Vet allows students to visualise and study the animals' internal anatomy, one step forward from the limited availability of deceased animal bodies.

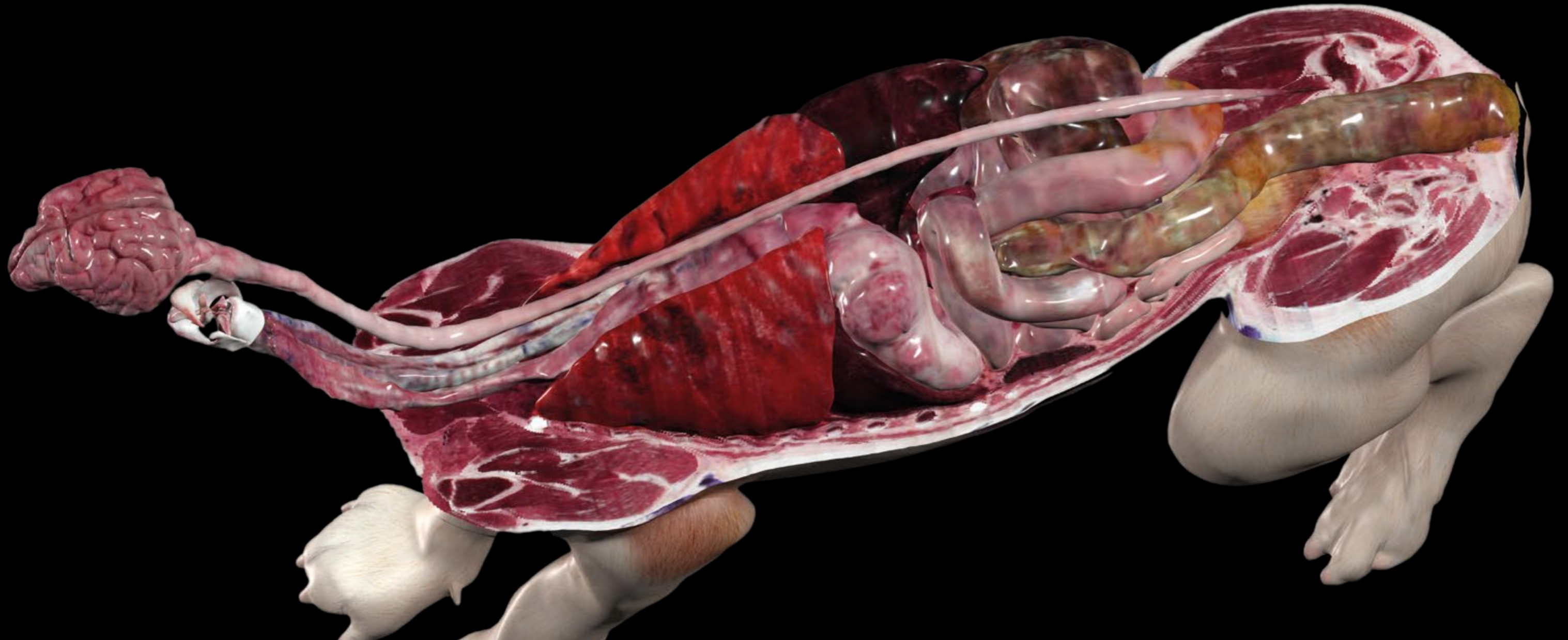
The first
dissection table
fully dedicated
to Animal
Science



Anatomage Dog

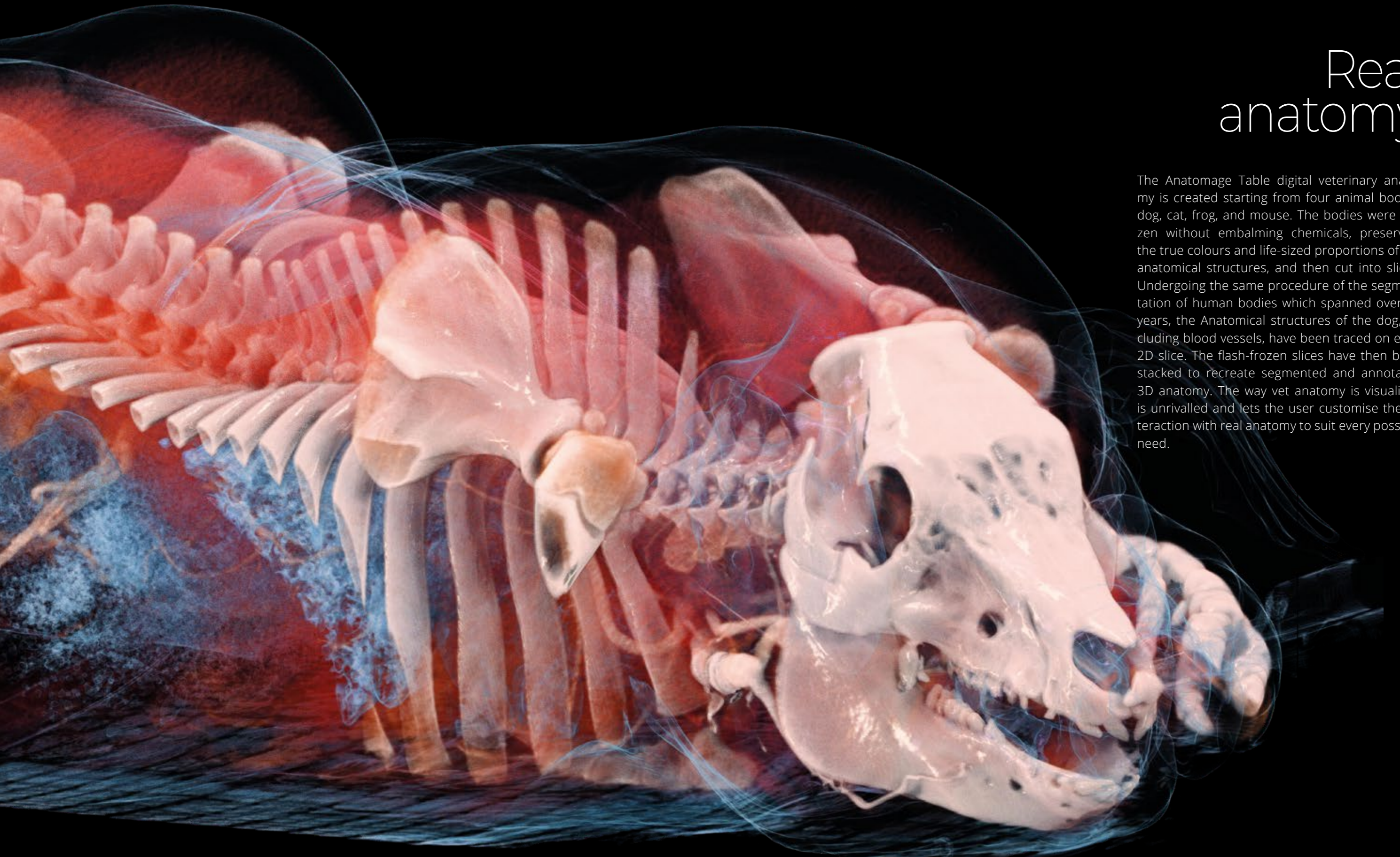
As the world's first exceptionally accurate dog anatomy atlas, Anatomage Dog features comprehensive annotated internal organs, including vascular systems and musculoskeletal structures, as well as more than 1100 anatomical structures segmented, and 3D layer-by-layer dissection capabilities. This animal gross anatomy model can be sliced repeatedly in any orientation and each anatomical structure can be separated and reviewed individually.

Each structure can be customised with a few touches and transparencies, notes, and annotations can also be added. The dog is segmented with high accuracy from real data and has been preserved with individual pathological and physiological details. It represents the first significant step towards the virtualisation and regeneration of animal science lessons.



Real anatomy

The Anatomage Table digital veterinary anatomy is created starting from four animal bodies: dog, cat, frog, and mouse. The bodies were frozen without embalming chemicals, preserving the true colours and life-sized proportions of the anatomical structures, and then cut into slices. Undergoing the same procedure of the segmentation of human bodies which spanned over 10 years, the Anatomical structures of the dog, including blood vessels, have been traced on each 2D slice. The flash-frozen slices have then been stacked to recreate segmented and annotated 3D anatomy. The way vet anatomy is visualised is unrivalled and lets the user customise the interaction with real anatomy to suit every possible need.

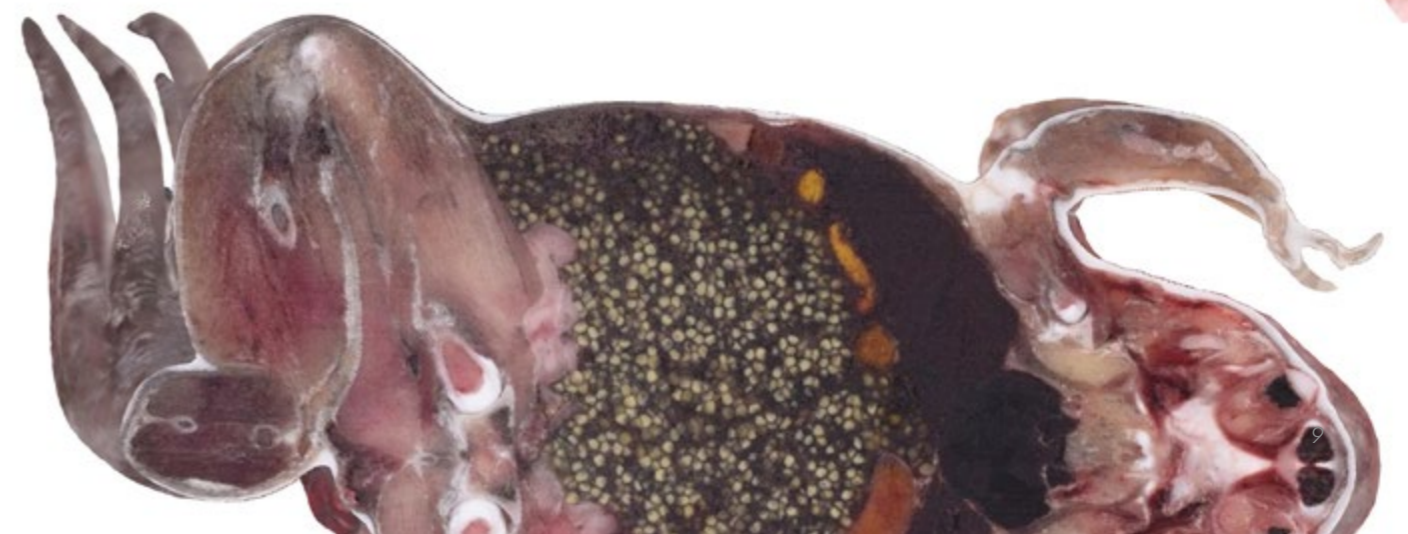
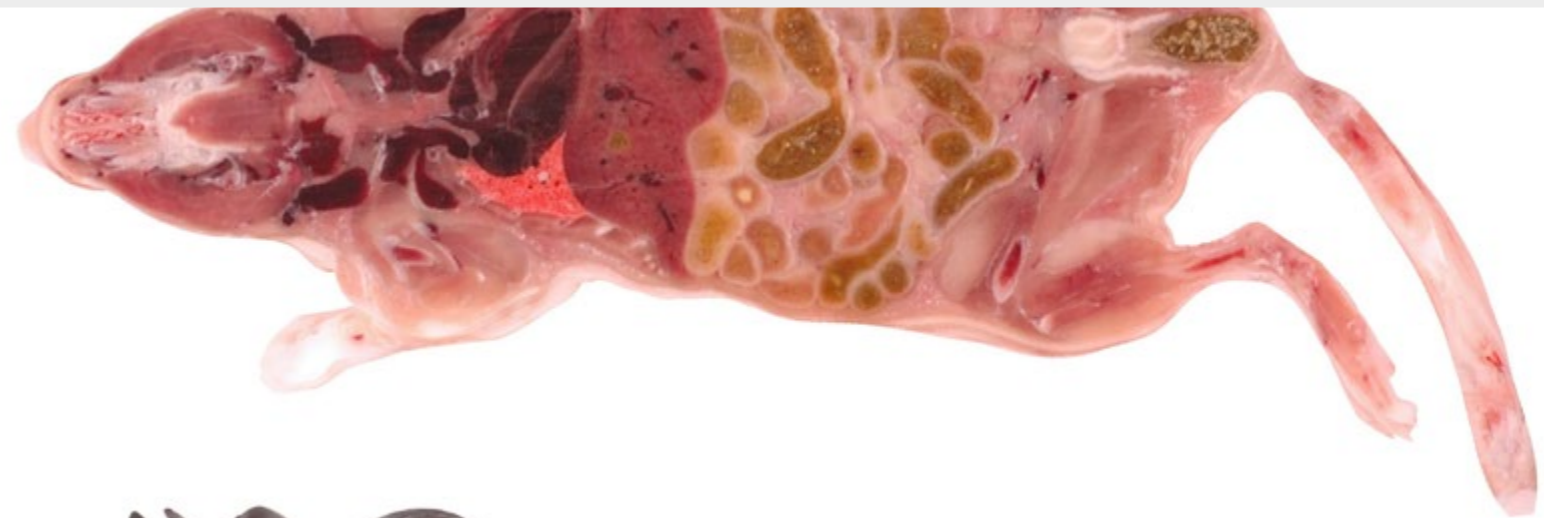




Frozen bodies

The full anatomy of four animals is volumetrically displayed from head to toe and it is directly connected to the picture of each slice. The vivid colours and shape of the bodies are preserved to accurately depict real anatomy. The digital animal bodies can be explored with dissection cuts layer by layer, revealing the details of internal structures.

The dog includes thousands of segmented and annotated structures. To get a deep understanding of anatomical relationships, structures can be removed, isolated or made transparent. All systems can be activated concurrently or added consecutively.



High accuracy

A plethora of DICOM cases with unrivaled accuracy, high-quality renderings are a welcomed addition to Table Vet.

The ability to reconstruct DICOM data in real-time and apply the numerous different renderings to each scan provides the user with limitless learning

opportunities. Users can go one step further by loading individually and previously acquired DICOM scans to the Table Vet, all the while enjoying the same high-quality interactive teaching experience.

Table Vet provides an unparalleled level of detailed accuracy for

each reconstructed DICOM scan.

Users can expedite their diagnosis process by comparing their data with the pre-existing data available within the Table Vet.

True to life visuals

The Digital Animal Library offers over 250 clinical cases from various animal species, including farm, companion and wild animals.

Users can access the original 2D scan data, veterinary case notes, and the resulting 3D image with

multiple cinematic renderings. The variety of cases ensures that students gain exposure to physiological conditions, common pathologies and traumas, along with extremely rare pathologies. Imaging cases can be explored and analysed using dissection cuts in any direction.

Cuts are really helpful also when the user is in the need of isolating a structure or a pathological area which can be further measured to define the next moves to shorten the patient's journey.



A multifaceted device

Countless applications within one device

DISSECTION COURSES

Virtually dissect, rebuild, and start over as many times as needed. Improve real animal dissection with Table Vet and reinforce what has been learned.

LECTURE THEATRE

Create lessons by configuring multiple screens or by connecting the Table to an external projector.

COLLABORATIVE SESSIONS

Let students learn anatomy together, compare their knowledge, and set up multiple lab activities from reviews to case studies.

CLINICAL CASE REVIEWS

Animals' data can easily be imported and examined. Thanks to the possibility to import new DICOMs, clinical evaluations and surgical plannings can be speeded up.

SIMULATION

Use the Table to clearly brief your trainees. Import 3D models of virtual medical devices on frozen animal bodies or DICOMs to simulate real cases.

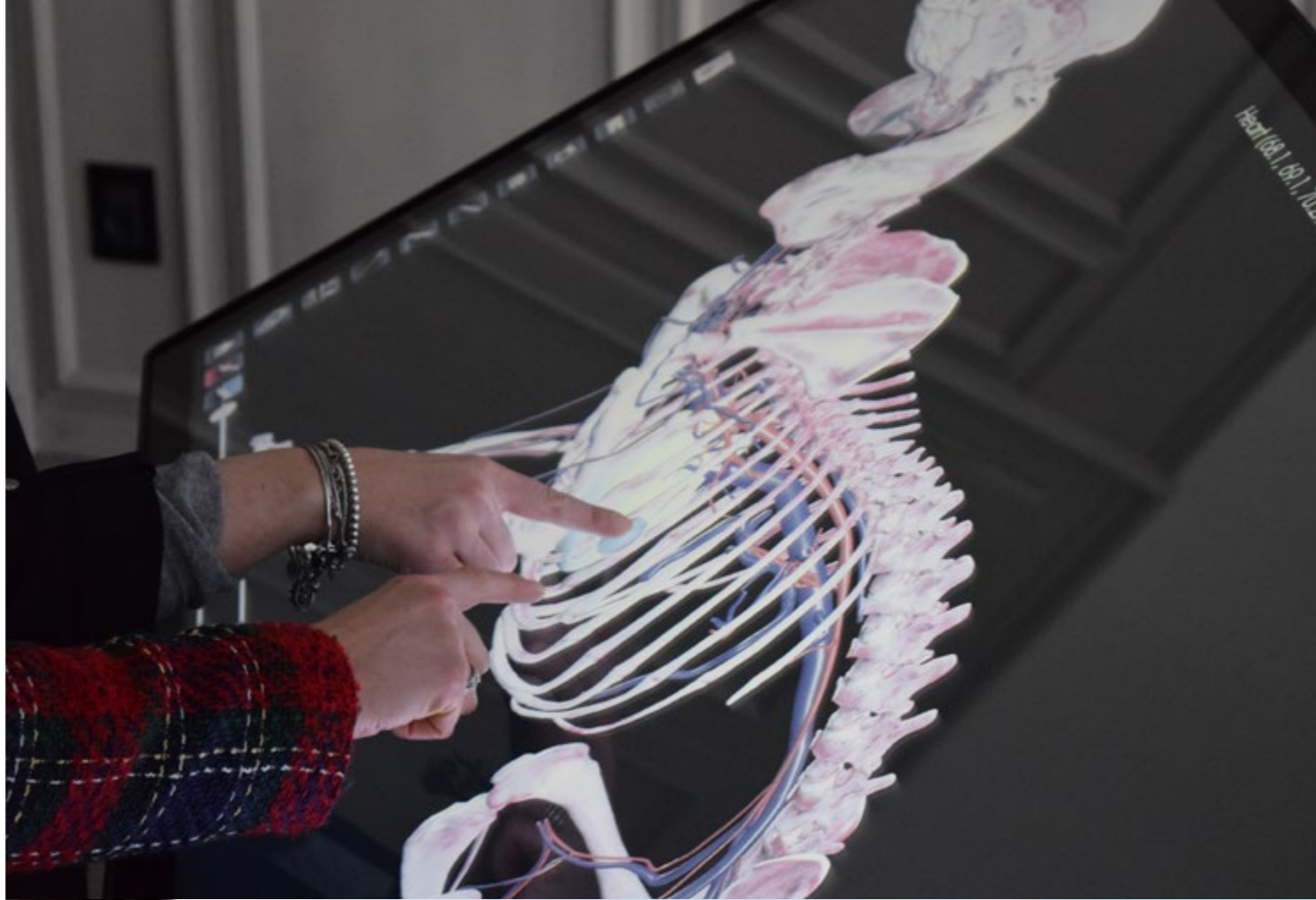


Table Vet wherever you are

TABLE VET | ON-SITE

The motorised virtual table screen displaying real animal cadavers makes Table Vet a fascinating device to be used in class.

The interaction with the life-sized bodies and DICOMs through the touch-screen stimulates the students and better engages them through the entire learning process.

TABLE VET | REMOTE

Any blended curriculum can be effortlessly developed with Anatomage. Users can connect the Table to the internet and perform lessons by controlling the Table remotely.

Table Vet contents can be streamed or captured through videos or screenshots for presentations and more.

Tools

VIRTUAL DISSECTIONS

Over 10 years in the making, Anatomage Tables offer unique interactive dissection and reference tools. Users can rotate the animal bodies and cut on any plane. A dynamic view of internal anatomy is runtime reconstructed with vivid life-like colours to get a realistic feeling of each structure and the surrounding ones. Different scalpels are available to perform planar cuts on the anatomical planes, or free-hand cuts to remove skin, subcutaneous fat, and deeper structures in a specific region. The possibility to undo at any time makes the bodies dissectible for an endless number of times.

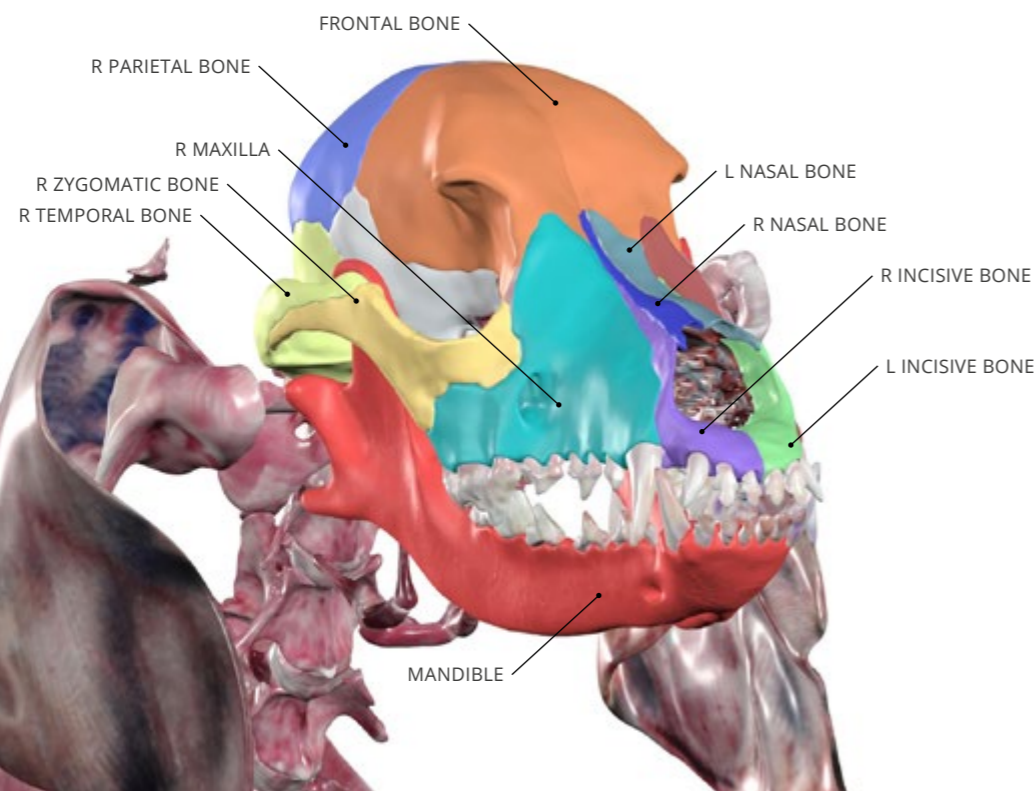
ANNOTATIONS & QUIZZES

For the first time, Table Vet offers the possibility to visualise the full segmentation of the dog

and its annotated structures. Users can explore the body by selecting different 3D models or by selecting specific structures from the full list of segmented models. All anatomical structures can also be highlighted with pins to create customised quizzes. Interactive automated quiz modes are also available to engage the students more than ever.

CURRICULUM PREPARATION

The preparation of the curriculum has never been more instantaneous. Thousands of presets can be saved, exported and recalled anytime. Each preset helps the user in identifying the main points from each lesson. Each visualisation can be exported as an image or a video.



Hardware specs

OUR DEDICATION TO CUSTOMERS

Anatomage cares about its community and offers continuous support to customers. More than 2,600 Anatomage Tables for human anatomy have been sold worldwide, and every member of our global community of educators and researchers has been assisted in developing their own contents and ideas on how to best incorporate the Table into a wide range of curricula and disciplines.

The customer is supported through online and on-site trainings. An additional series of complimentary webinars, the Anatomage Academy, is also offered to keep customers' interaction with the Table at the highest level. The Table arrives ready to use and no installation is required. User instructions are embedded on the table desktop in PDF format with step-by-step descriptions in English. How-To videos can be found on Anatomage's YouTube channel.

PRODUCT DIMENSIONS	
Length:	127 cm (50")
Height:	81/185 cm (32"/73")
Width:	76/71 cm (30"/28")
WEIGHT	
	125 kg (275 lbs)
DISPLAY SIZE	
	55"
POWER SUPPLY	
	110-240V AC, 50/60Hz, 10A
I/O	
	RJ45
	HDMI
	USB (X2)
	WiFi
	Bluetooth



About Anatomage

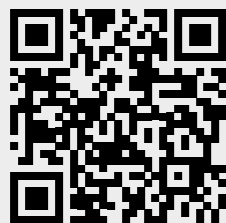
Since 2004 Anatomage has been a leading medical device company driving innovation in the healthcare and education industries. Anatomage's advanced solutions are being used in tens of thousands of universities, clinics, hospitals, and other institutions worldwide.

Our products include virtual dissection tables, online anatomy and physiology web-based platform, and radiology software. Anatomage continues to establish exclusive partnerships with renowned educational institutions and medical equipment companies.

Our cutting-edge and unique products have been featured numerous times in journals, publications, and the media, including TED Talks, BBC, CBC, Japanese Fuji TV, PBS, and other notable outlets. Located in the heart of the Silicon Valley, Anatomage is a fast-growing company that continues to thrive in a place where technology is ingrained in the culture.

The company encourages the building of a diverse and positive culture and recruits top talents. Anatomage's work environment is defined by our highly talented anatomists, biologists, medical specialists, and engineers who strive to create high-tech products that set new industry standards. With our revolutionary family of products, we aspire to advance medical education and improve patient care throughout the healthcare industry.

The Anatomage branch office in Milan leads the development of R&D projects in Europe. A dedicated European team trains and services European customers fast and reliably.



Anatomage Europe

Via Copernico 38, 20125 Milan, Italy
Phone: +39 02 87 25 92 27
www.anatomage.com
table.europe@anatomage.com

